

2006

## Beltline: Sanborn Maps: Peachtree node, Simpson node 1924-1950

Heritage Preservation students at Georgia State University, supervised by Richard Laub

Follow this and additional works at: [http://scholarworks.gsu.edu/history\\_heritagepreservation](http://scholarworks.gsu.edu/history_heritagepreservation)



Part of the [Historic Preservation and Conservation Commons](#)

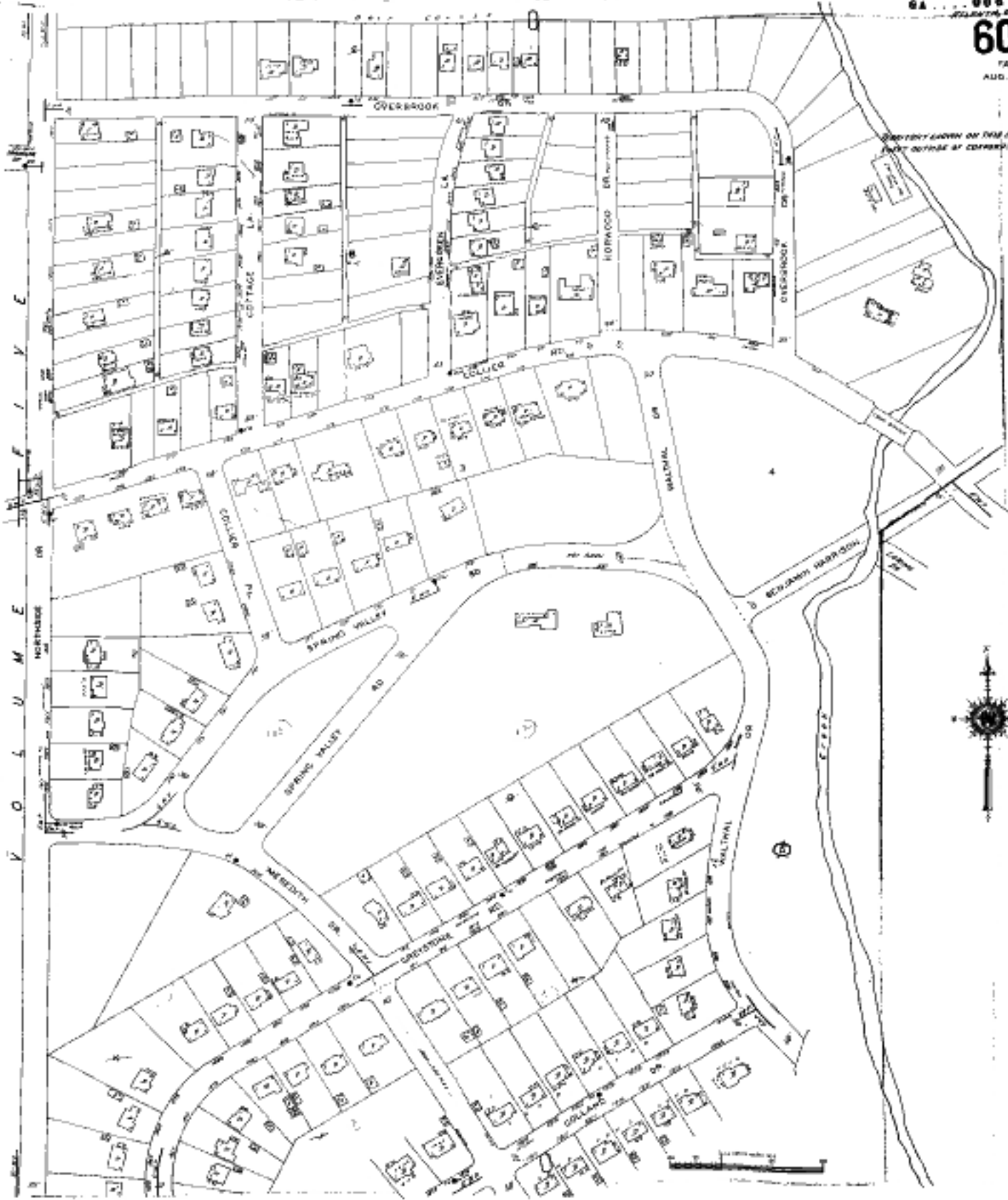
---

### Recommended Citation

Heritage Preservation students at Georgia State University, supervised by Richard Laub, "Beltline: Sanborn Maps: Peachtree node, Simpson node 1924-1950" (2006). *Heritage Preservation Projects*. 35.  
[http://scholarworks.gsu.edu/history\\_heritagepreservation/35](http://scholarworks.gsu.edu/history_heritagepreservation/35)

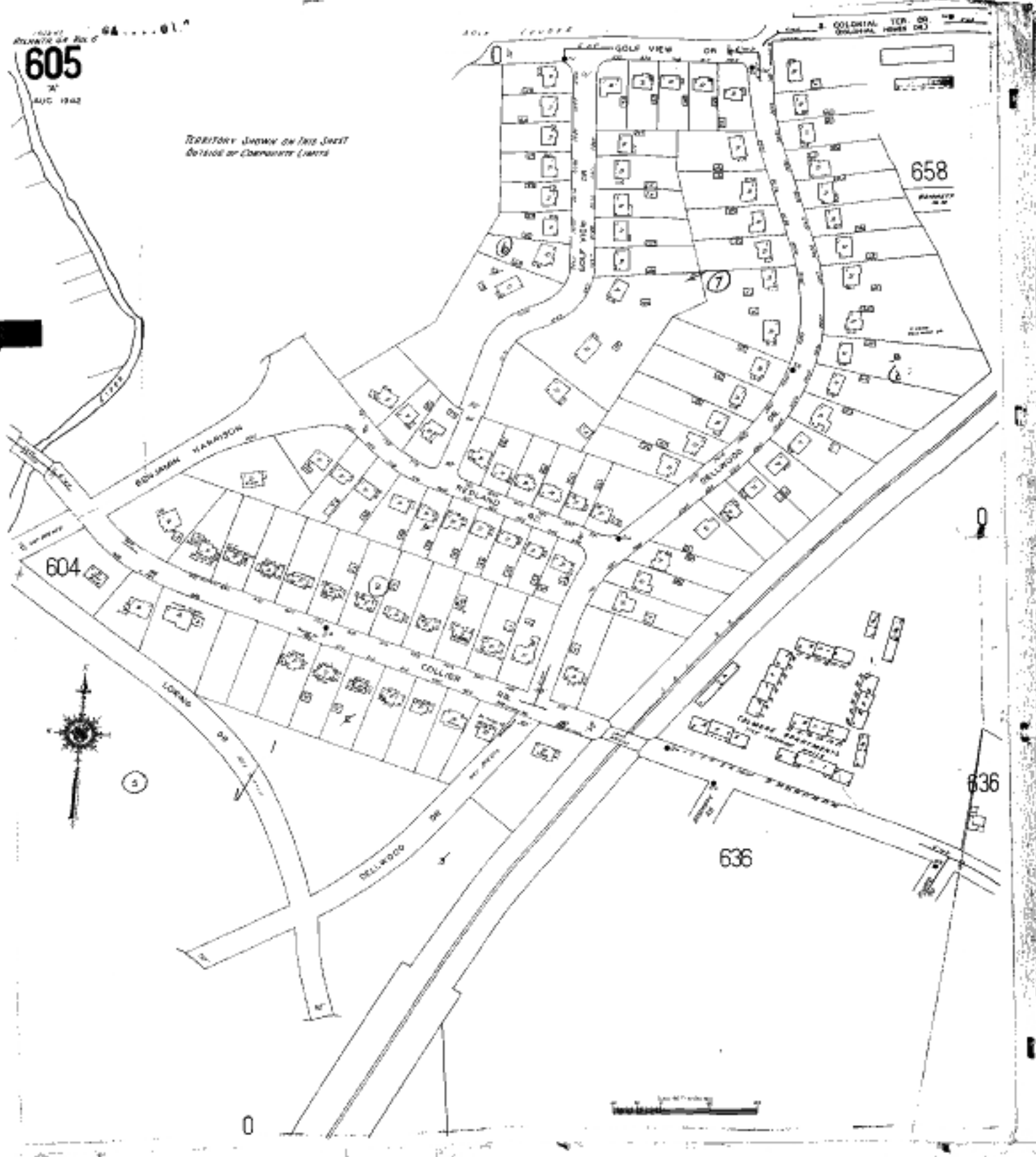
This Map is brought to you for free and open access by the Department of History at ScholarWorks @ Georgia State University. It has been accepted for inclusion in Heritage Preservation Projects by an authorized administrator of ScholarWorks @ Georgia State University. For more information, please contact [scholarworks@gsu.edu](mailto:scholarworks@gsu.edu).

PROPERTY SHOWN ON THIS SECTION OF  
MAP IS OWNED BY COMPANY'S LANDS



64...01.  
**605**  
AUG 1942

*Territory shown on this sheet  
divided on Company's lands*



604

658

636

636



609

615

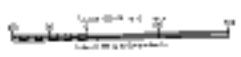
611

ADD. SHEET  
JULY 1931



607

608

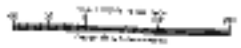
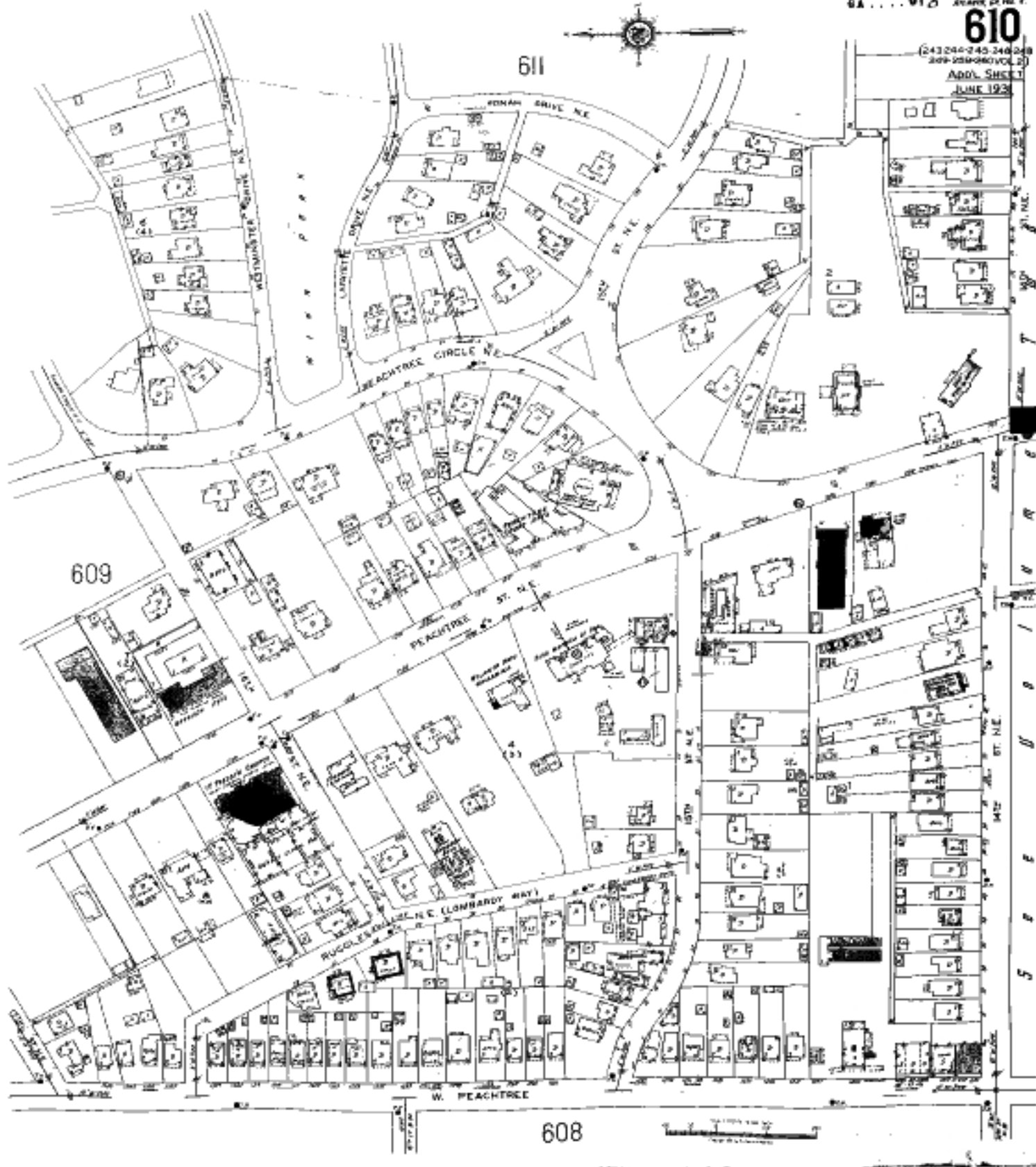




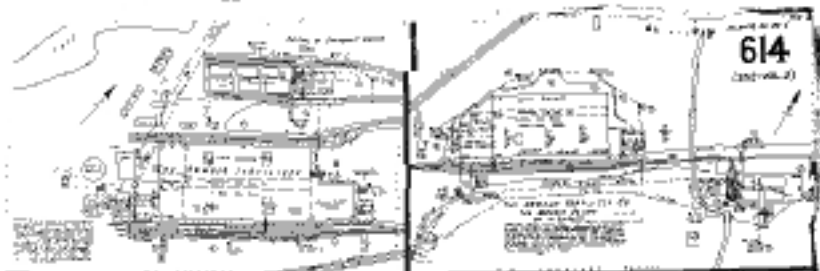
611

609

608



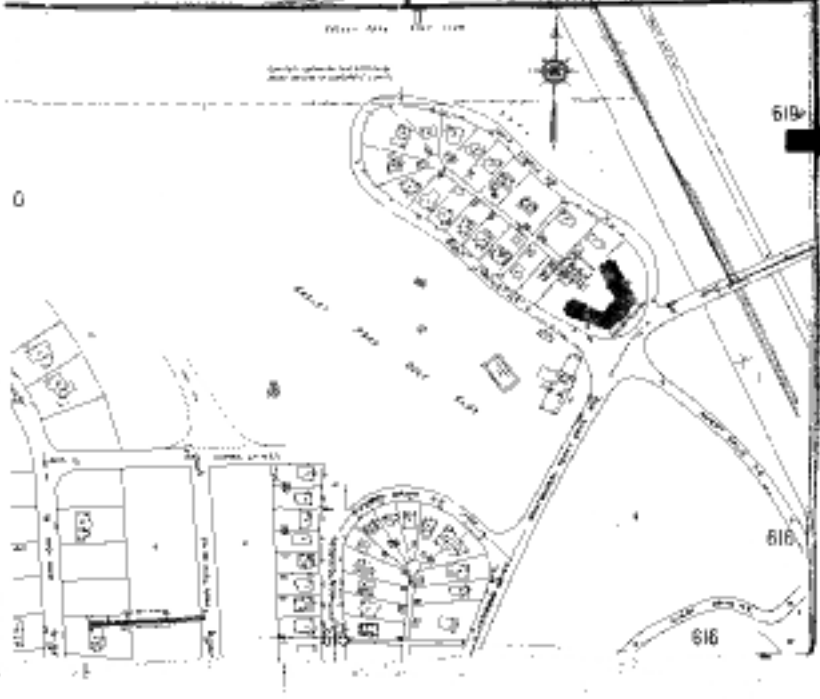
S  
E  
E  
U  
O  
I  
N  
C



614  
(cont. of 613)

SECTION 404 100' 0" 100' 0"

South-southwest building  
and main building (cont.)



619

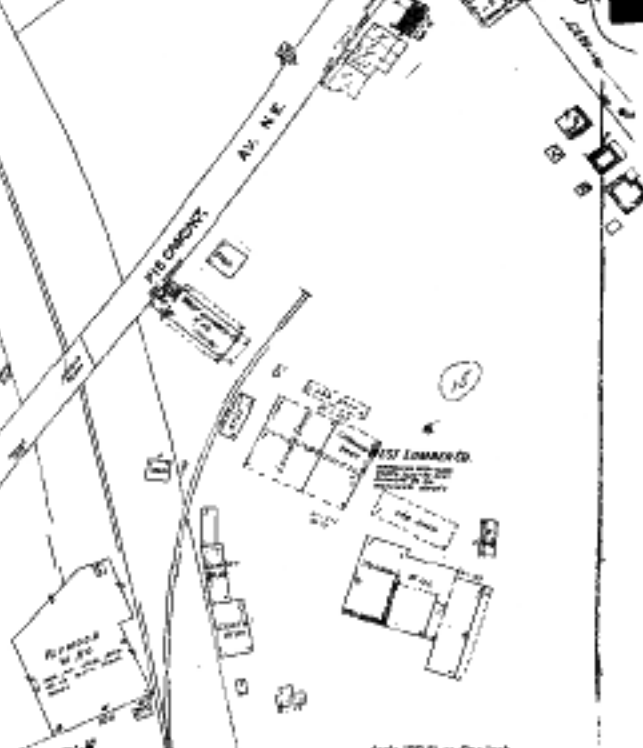
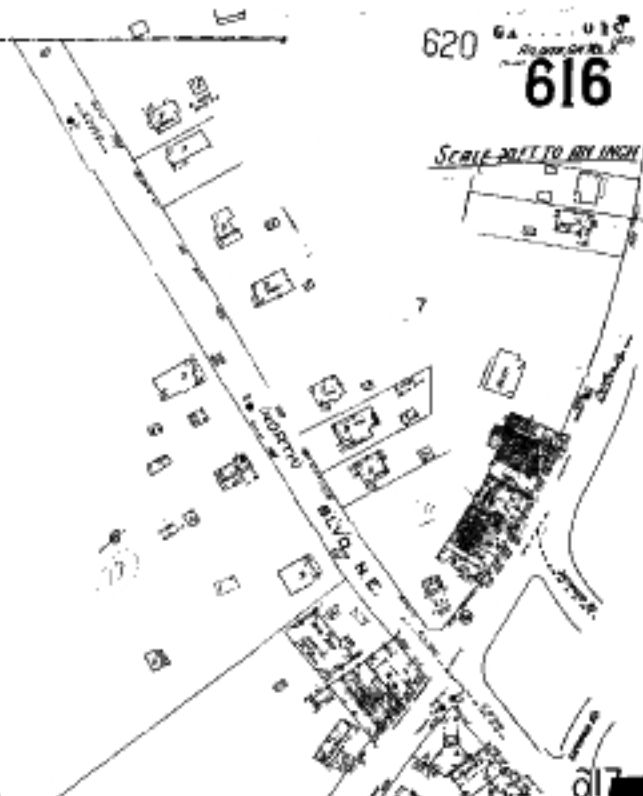
616

616

Scale 200 FT TO 1 INCH

619

614



Scale 200 FT to 1 in. (1 inch = 200 feet)

611

627

619

SCALE 1/32" = 1' INCH

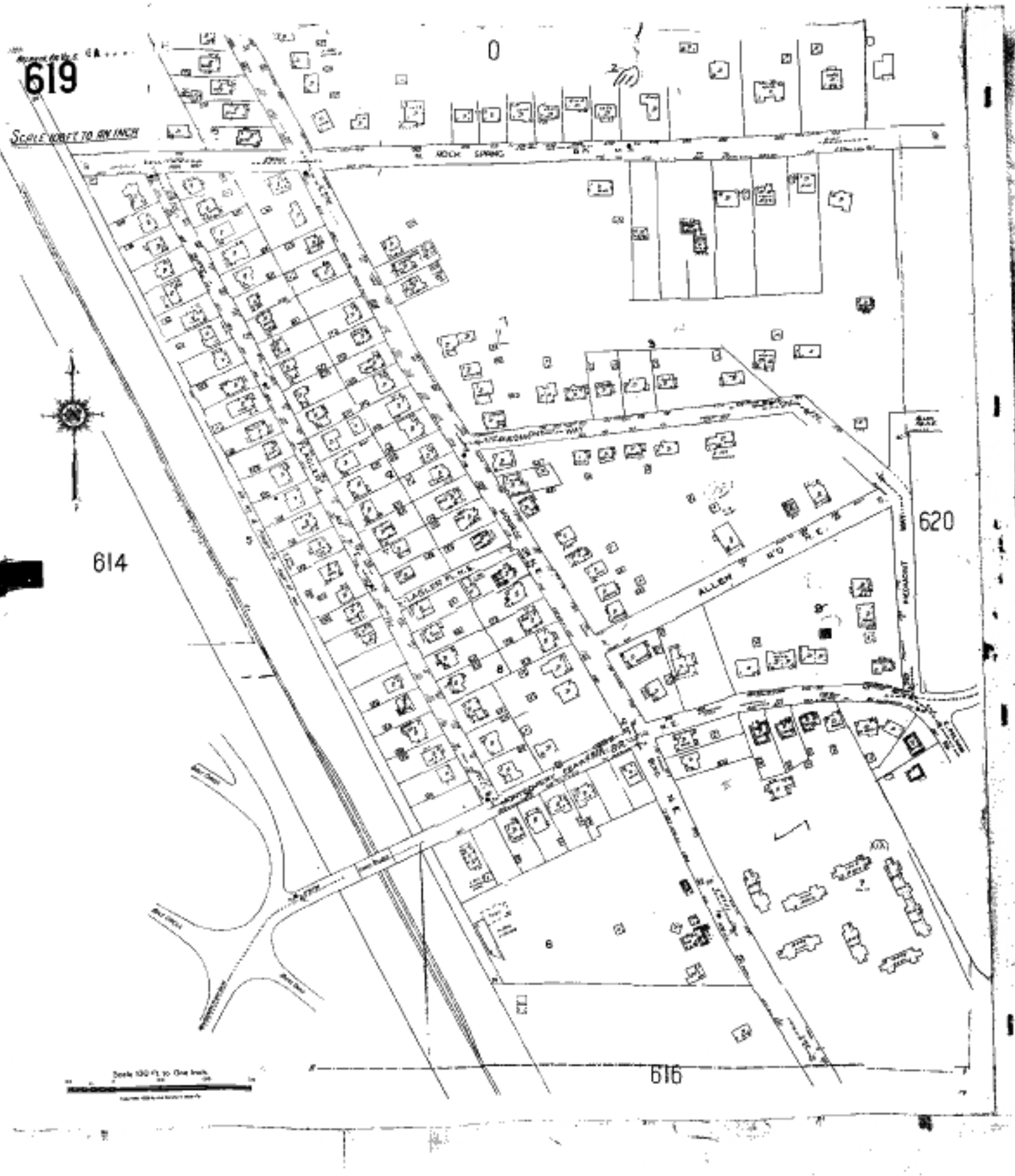


614

620

616

Scale 1/32" = 1' One Inch





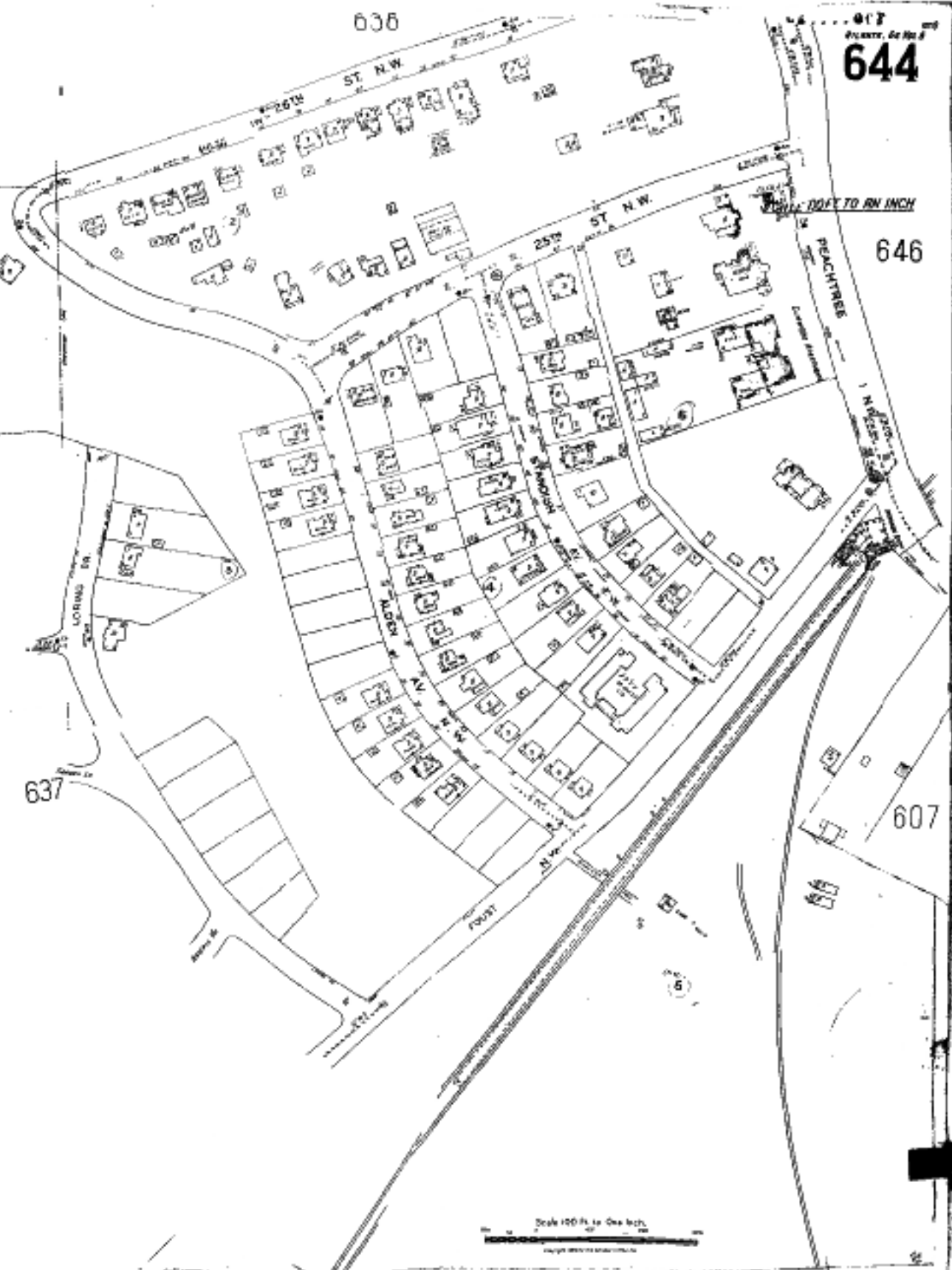
636

617  
PLAT No. 8  
**644**

646

607

637



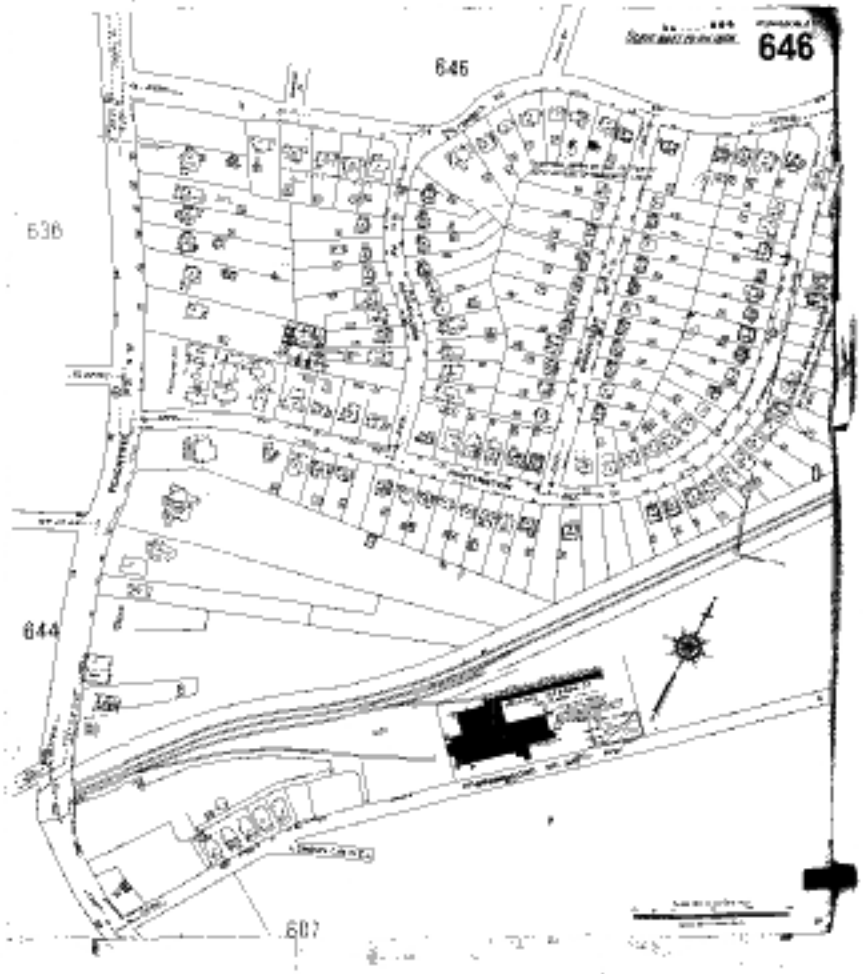
Scale 100 ft. to One Inch

645

636

644

607



647

1:25,000  
1:50,000  
1:100,000



649

660

648

648

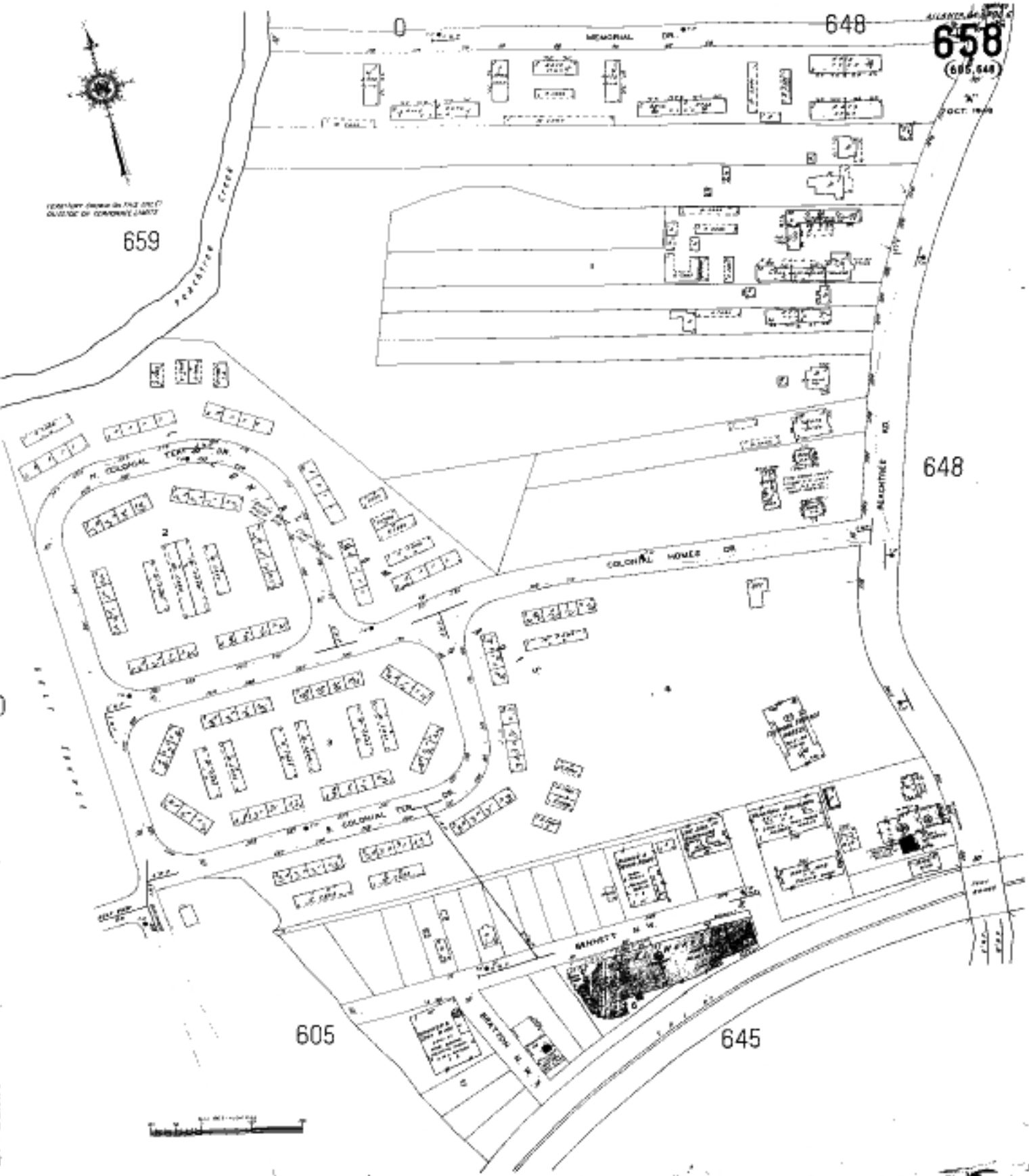




TERRITORY SHOWN IN THIS DISTRICT OUTSIDE OF TERRITORY LIMITS

659

PROSPECTIVE CREEK



648

658

(685,548)

DOCT. 1948

648

605

645





VOL. FOUR

VOLUME TWO

SCALE 1600 FT. TO AN IN.  
(APPROX)

GRAPHIC MAP  
OF VO

552

See also volume

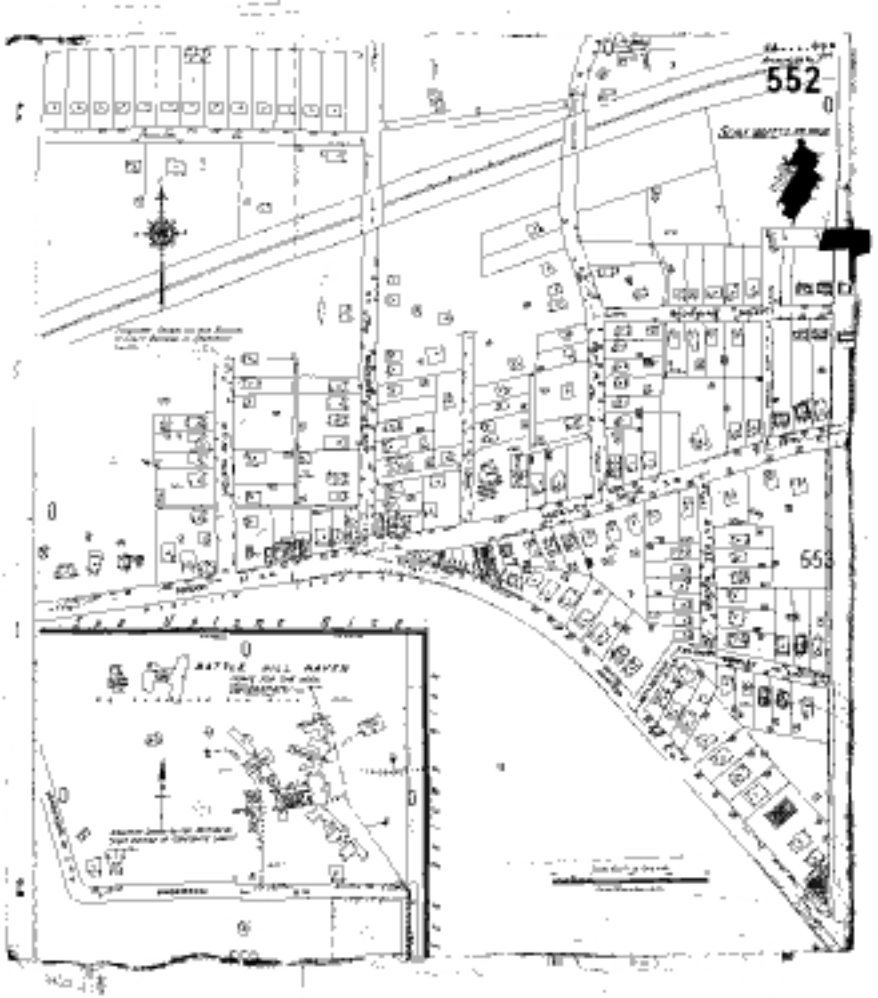
See also volume

553

BATTLE HILL HAVEN  
See also volume

See also volume

See also volume



555

554



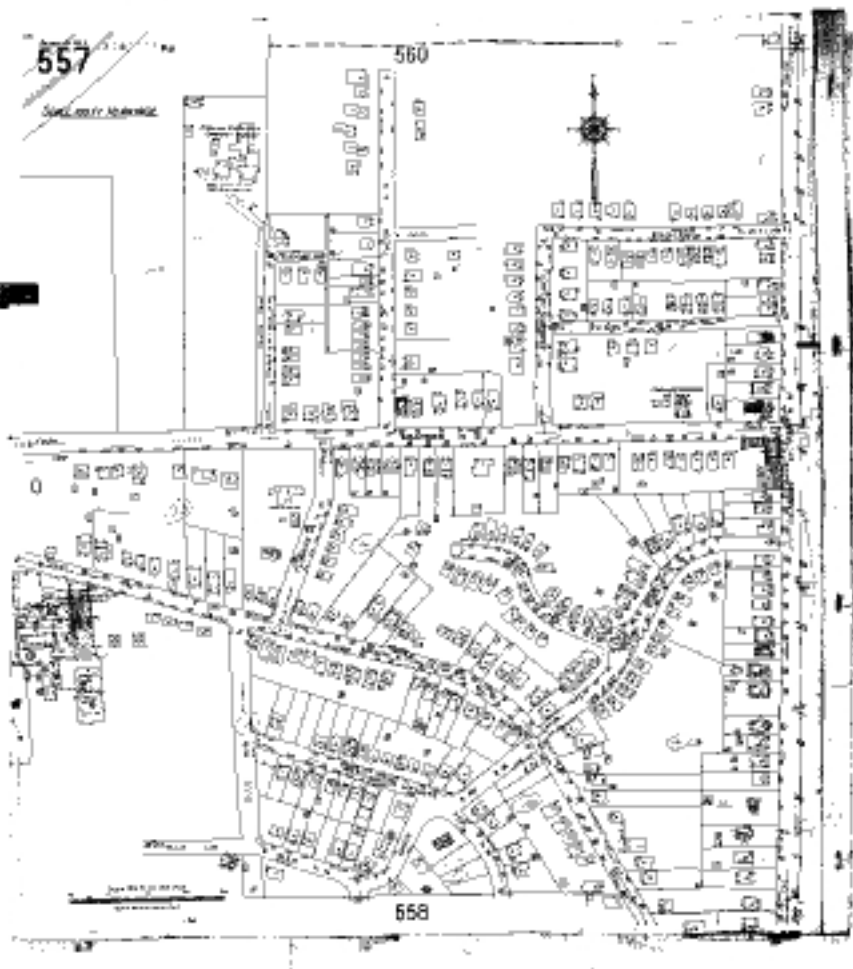
557

Geometric Analysis

560



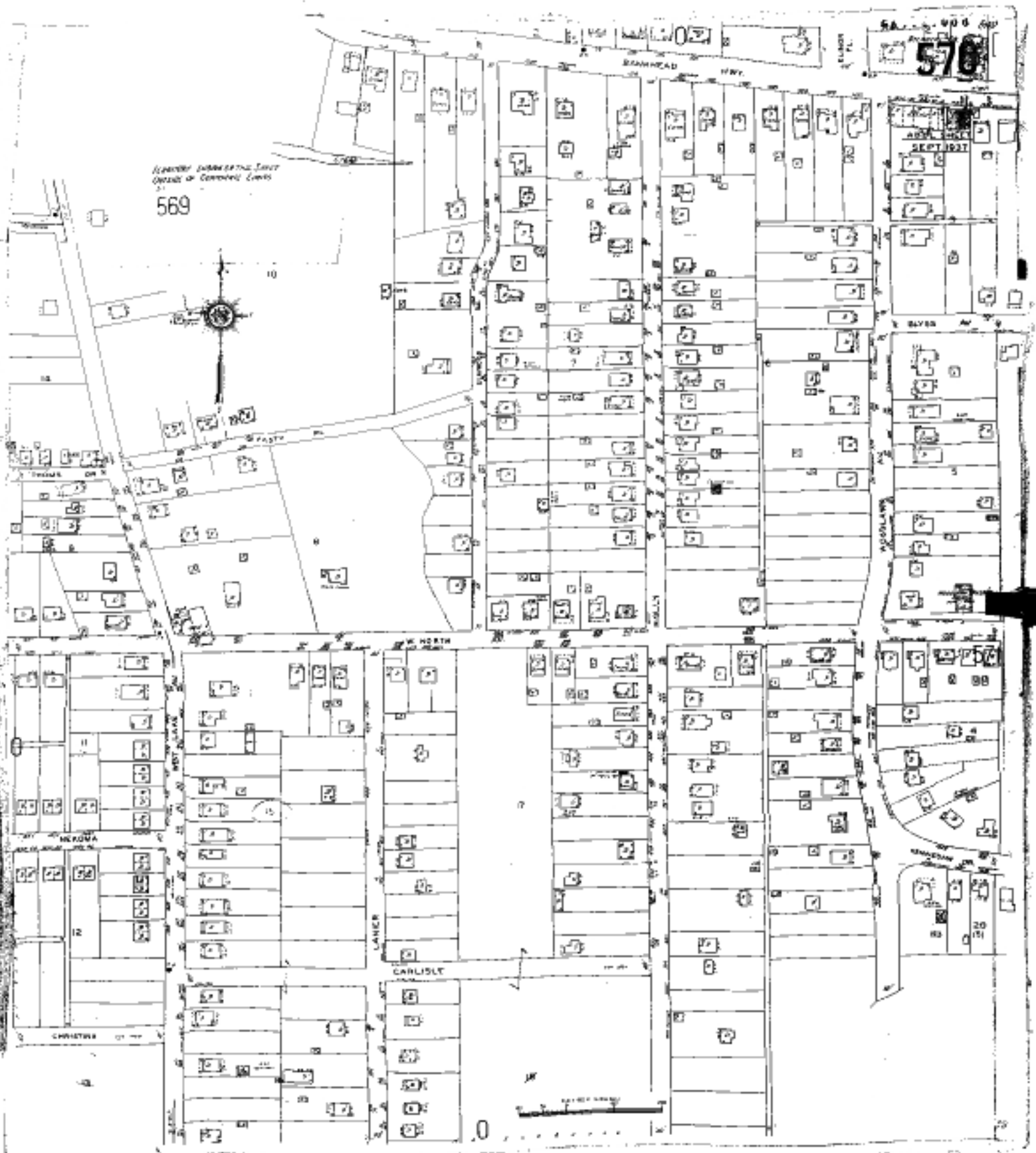
558





SA. 1000  
**570**

Transfer 1000 of the East  
District of Carroll City  
**569**



BANKHEAD HWY.

SEPT 1937

PASTY

WYOMING

N. NORTH

LAKER

CARLISLE

CHRISTINA

SCALE BAR