

Georgia State University

ScholarWorks @ Georgia State University

University Library Faculty Presentations

Georgia State University Library

Fall 10-16-2024

RUSA STARS Interlibrary Loan Discussion Group: Alternatives to CONTU in Practice

Braegan Abernethy

Follow this and additional works at: https://scholarworks.gsu.edu/univ_lib_facpres



Part of the [Library and Information Science Commons](#)

Recommended Citation

Abernethy, Braegan, "RUSA STARS Interlibrary Loan Discussion Group: Alternatives to CONTU in Practice" (2024). *University Library Faculty Presentations*. 48.
https://scholarworks.gsu.edu/univ_lib_facpres/48

This Presentation is brought to you for free and open access by the Georgia State University Library at ScholarWorks @ Georgia State University. It has been accepted for inclusion in University Library Faculty Presentations by an authorized administrator of ScholarWorks @ Georgia State University. For more information, please contact scholarworks@gsu.edu.



Public research university

- Atlanta campus + 5 Perimeter College campuses
- 6,000+ Faculty & Staff
- 51,000 + Undergraduate & Graduate students

ILL averages annually

- 5000+ Borrowing requests
 - 3600+ Borrowing copy requests
- 6000+ Lending requests
- 150+ Document Delivery requests

ILLiad resource management

- OCLC & RapidILL
- GIL Express (consortial borrowing via ILS)
 - 650+ Borrowing, 2400+ Lending

Moving Beyond CONTU

- OCLC RSC19: Miller, B., & Rudd, A. (2019, March 19-21). *An Alternative to CONTU: Developing and Implementing Your Own ILL Copyright Compliance Policy* [Conference Presentation]. OCLC Resource Sharing Conference 2019, Jacksonville, FL, United States. https://www.oclc.org/content/dam/oclc/events/2019/rsc19/presentations/OCLC_RSC19_Alternative_to_CONTU_Developing_Own_Compliance.pdf
- ARL Whitepaper: Oakley, M., Quilter, L., & Benson, S. *Modern Interlibrary Loan Practices: Moving beyond the CONTU Guidelines* [Whitepaper]. Washington, DC: Association of Research Libraries, August 31, 2020. <https://doi.org/10.29242/report.contu2020>

Development

Are we paying copyright for requests which do not meet “aggregate quantities as to substitute for a subscription or purchase?”



- Copyright price = value

	A	B	C	D	E
1	Journal Title	Journal Year	Reprints price	CCC Price	Subscription price
2	Brain Injury	2016	\$57.00	\$64.00	\$ 6,148.00
3	Brain Injury	2019	\$57.00	\$64.00	\$ 6,148.00
4	Brain Injury	2016	\$57.00	\$64.00	\$ 6,148.00
5	Brain Injury	2017	\$57.00	\$64.00	\$ 6,148.00
6	Brain Injury	2017	\$57.00	\$64.00	\$ 6,148.00
7	Brain injury	2018	\$57.00	\$64.00	\$ 6,148.00

Proposal: Stop the practice of using CONTU Guidelines in Resource Sharing

Executive Summary:

This proposal is to discontinue the practice of requesting permission and paying copyright fees for journal articles where we exceed the CONTU Guidelines' "rule of five." The CONTU Guidelines do not carry the weight of law; rather, these guidelines were intended to help librarians interpret the Copyright Act as it applies to resource sharing, but the rigid application of the Guidelines is not practical in 2021. GSU Libraries should discontinue our compliance with CONTU Guidelines and focus on our compliance with the Copyright Act itself.

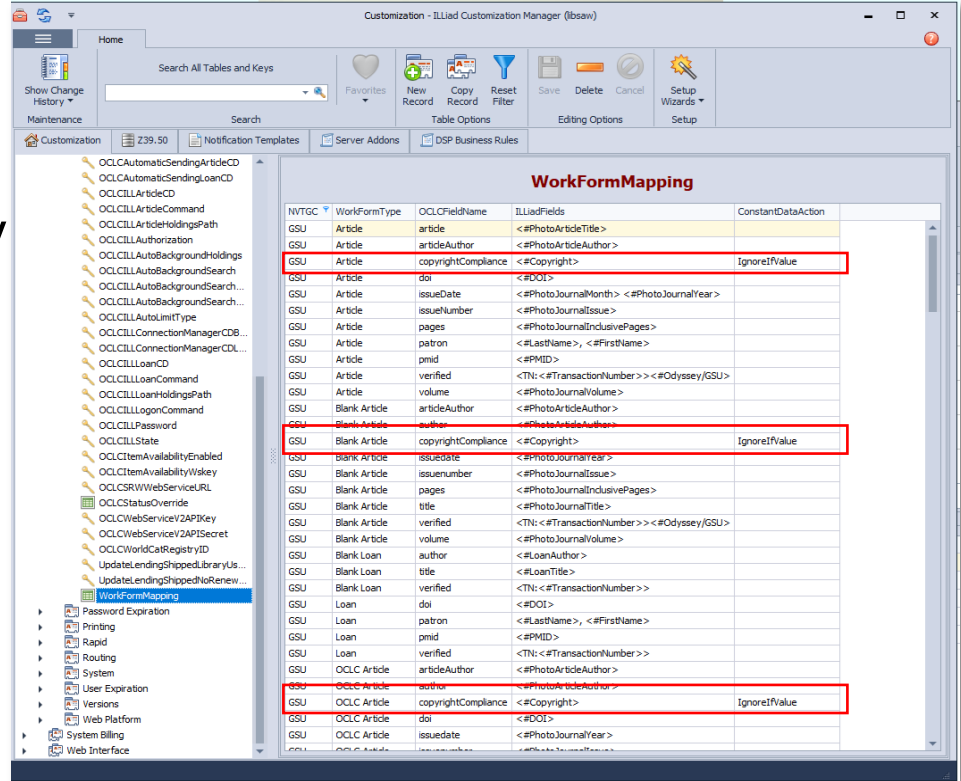
- Background of Copyright Act & CONTU Guidelines
- Justification for developing our own process for compliance with the Copyright Act

- Rule of 20

Mean	50
Median	33
Minimum	4
Maximum	236

ILLiad workflows

- CCG to CCL
- Specify CCL in all outgoing copy requests
 - Customization manager
 - System>OCLC > Workformmapping: for every OCLCFieldName that contains copyrightCompliance, change the ConstantDataAction to IgnoreIfValue



ILLiad workflows

- CCG to CCL
- Worldshare
 - OCLC Service Configuration, Configure Borrower Constant Data (under Borrower Data), select CCL in the Copyright Compliance section

The screenshot shows the WorldShare ILL configuration interface. The left sidebar contains a menu with the following items: Interlibrary Loan Options, Borrower Data (highlighted), Lender Data, Custom Holdings Groups, Custom Holdings Paths, Automated Request Manager, Article Exchange Settings, Purchase Options, Patron Request Workflows, Print Settings, Advanced Workflows, Patron Settings, Contacts, Notifications, and External System Settings.

The main content area is titled "WorldShare ILL" and contains the following sections:

- Electronic Delivery Service:** Three dropdown menus labeled "Electronic Delivery Service choice 1:", "Electronic Delivery Service choice 2:", and "Electronic Delivery Service choice 3:", each with the text "-Select an Electronic Delivery option-".
- ILL Fee Management (IFM):** A checked checkbox. Below it, "Maximum Cost" is set to "70.00" and "Currency" is set to "USD". A note states: "If you only want items that are free, enter 0.00. If you do not enter an amount, you will be responsible for whatever the lender charges."
- Copyright Compliance:** Three radio button options: "CCG: Conforms to CONTU Guidelines", "CCL: Conforms to U.S. Copyright Law" (which is selected and highlighted with a red box), and "None".
- Affiliations:** A text field containing "ARCHE/Univ. Sys. of GA/Gold/Soline/Asen/WRLC".
- Billing Notes:** A text area containing "Please include ILL# on invoice. (Fein #58-6002050)".
- Borrowing Notes:** A text area containing "GA Courier ATL-GSU".

ILLiad workflows

- Rule of 20
- Change default copyright query
 - Create copyright.txt file using default query from ILLiad documentation:
<https://support.atlasys.com/hc/en-us/articles/360011807774-The-Default-Copyright-Query>

```
SELECT DISTINCT PhotoJournalTitle FROM Transactions
WHERE TransactionStatus != 'Cancelled by ILL Staff'
AND TransactionStatus != 'Cancelled by Customer'
AND TransactionStatus != 'Awaiting Copyright Clearance'
AND ISNULL(CopyrightAlreadyPaid, 'No') != 'Yes'
AND DATEPART(year, CreationDate) = DATEPART(year, GETDATE())
AND PhotoJournalYear > CONVERT(varchar(4),(DATEPART(year,
GETDATE()) - 5))
AND ProcessType = 'Borrowing'
GROUP BY PhotoJournalTitle
HAVING COUNT(PhotoJournalTitle) > 4
ORDER BY PhotoJournalTitle
```

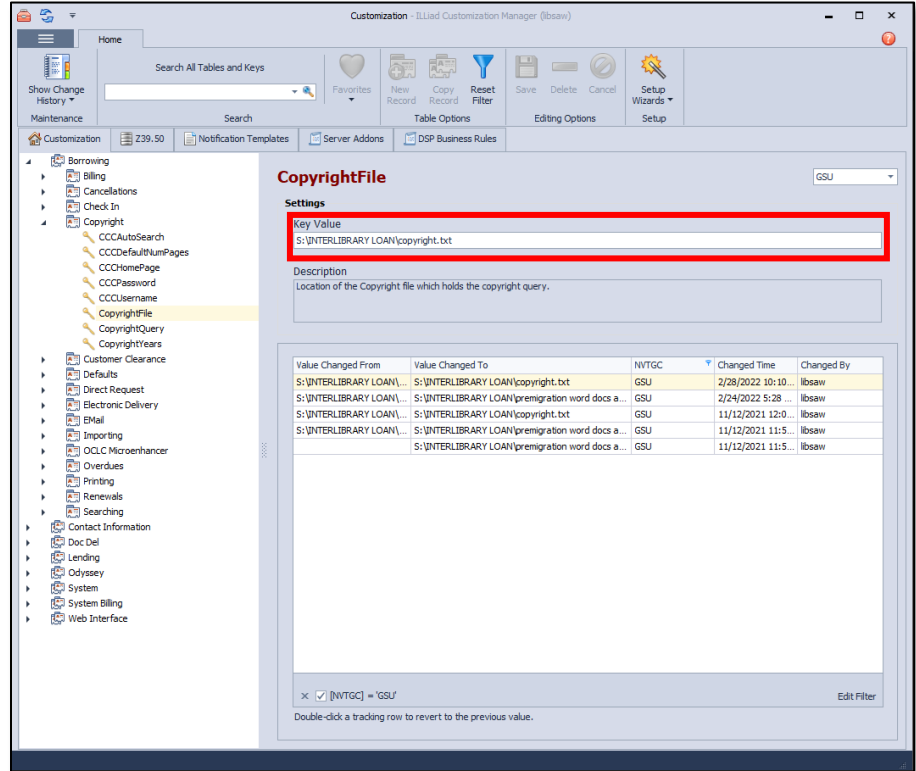
ILLiad workflows

- Rule of 20
- Change default copyright query
 - Create copyright.txt file using default query from ILLiad documentation:
<https://support.atlasys.com/hc/en-us/articles/360011807774-The-Default-Copyright-Query>

```
SELECT DISTINCT PhotoJournalTitle FROM Transactions
WHERE TransactionStatus != 'Cancelled by ILL Staff'
AND TransactionStatus != 'Cancelled by Customer'
AND TransactionStatus != 'Awaiting Copyright Clearance'
AND ISNULL(CopyrightAlreadyPaid, 'No') != 'Yes'
AND DATEPART(year, CreationDate) = DATEPART(year,
GETDATE())
AND PhotoJournalYear >
CONVERT(varchar(4),(DATEPART(year, GETDATE()) -
200))
AND ProcessType = 'Borrowing'
GROUP BY PhotoJournalTitle
HAVING COUNT(PhotoJournalTitle) > 19
ORDER BY PhotoJournalTitle
```

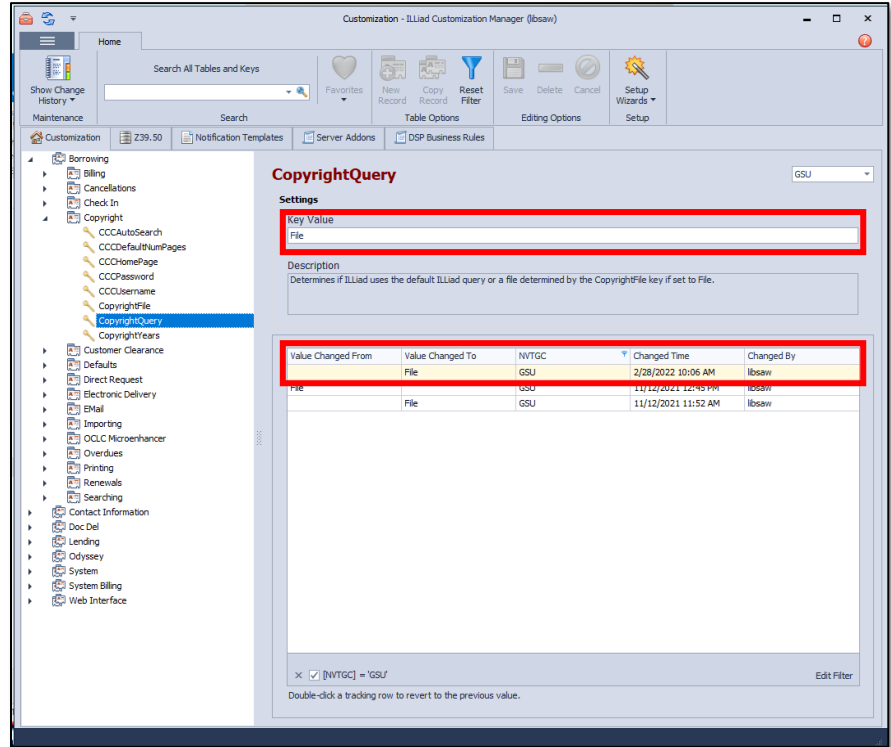
ILLiad workflows

- Rule of 20
- Apply new copyright.txt file to ILLiad processes
- Customization Manager
 - Under Borrowing > Copyright, go to the CopyrightFile key and enter the location of the query you created in the Key Value field (ours is S\INTERLIBRARY LOAN\copyright.txt).



ILLiad workflows

- Rule of 20
- Apply new copyright.txt file in ILLiad
- Customization Manager
 - Also under Borrowing > Copyright, go to the CopyRightQuery key and change the value to File. This tells ILLiad to use the query you created instead of the default query.



Quarterly Review



- Review list of journal titles in borrowing
- Determine subscription and copyright cost for anything borrowed over the Rule of 5
- Begin paying copyright or continue to new Rule of 20 based on previous criteria

Quarterly Review Examples

A	B	C	D	E	F	G
Journal Title	Journal Year	Copyright Already Paid	Subscription Cost	Publisher	Copyright cost	Notes
Journal of Hand Surgery	2014	No	\$ 1,065.00	Elsevier	\$24.45- Reprints, \$41.50- CCC	keep going to 20
Journal of Hand Surgery	2013	No				
Journal of hand surgery	2012	No				
Journal of hand surgery	2011	No				
Journal of hand surgery	2010	No				
Journal of Hand Surgery	2010	No				
Journal of hand surgery	2002	No				
Journal of Hand Surgery	1998	No				
Journal of hand surgery	1991	No				

Quarterly Review Examples

A	B	C	D	E	F	G
Journal Title	Journal Year	Copyright Already Paid	Subscription Cost	Publisher	Coypyright cost	Notes
international journal of transitional justice	2020	No	\$ 472.00	Oxford	\$35- reprints, \$51.50- CCC	Begin paying copyright
international journal of transitional justice	2020	No				
international journal of transitional justice	2017	No				
international journal of transitional justice	2014	No				
international journal of transitional justice	2014	No				
international journal of transitional justice	2011	No				
international journal of transitional justice	2008	No				
international journal of transitional justice	2008	No				
international journal of transitional justice	2008	No				
international journal of transitional justice	2007	No				
international journal of transitional justice	2011	No				

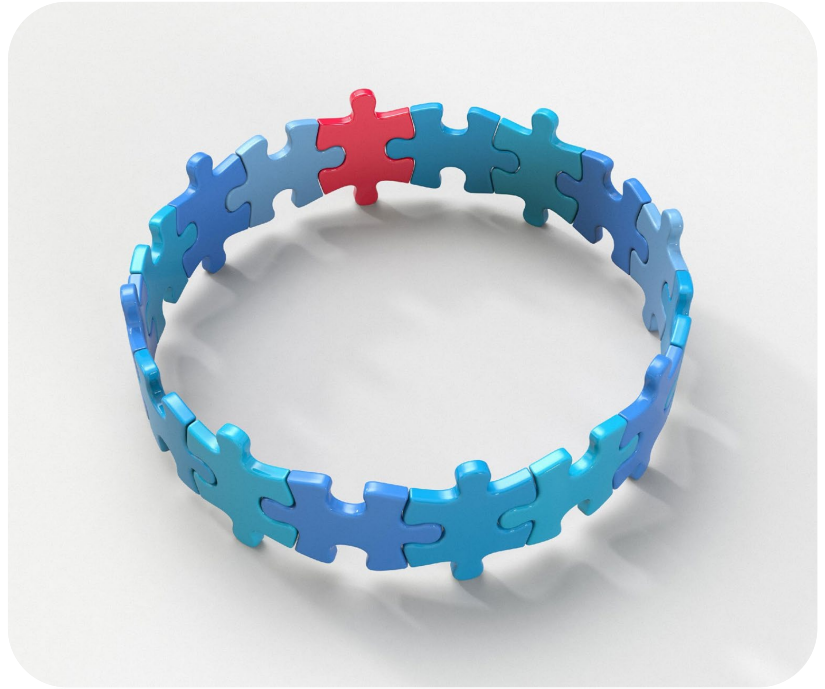
End of year review example

Photo Journal Title	Journal Year	Copyright Already Paid	Base Fee	Subscription Cost	Publisher	Copyright	Decision
Neuropsychopharmacology	2022	No		\$6,362.81	Springer	\$53.45	119 requests = subscription; no payment necessary
Neuropsychopharmacology	2022	No					
Neuropsychopharmacology	2022	No					
Neuropsychopharmacology	2022	No					
Neuropsychopharmacology	2022	No					
Neuropsychopharmacology	2021	No					
Neuropsychopharmacology	2022	No					

Unintentional benefits

Collection
development

ILS record
cleanup



Results & small changes

New Guidelines- Actual		CONTU Guidelines	
total copyright multiple articles/same issue	\$1,723.03	total copyright multiple articles/same issue	\$1,723.03
total copyright new guidelines	\$84.00	total copyright contu	\$4,260.22
total copyright last resort suppliers	\$233.95	total copyright last resort suppliers	\$233.95
total copyright for articles actual	\$2,040.98	total copyright for articles using contu	\$6,217.20

Considerations

