

Georgia State University

ScholarWorks @ Georgia State University

---

GHPC Materials

Georgia Health Policy Center

---

8-25-2017

## Rural Landscape Framework

Georgia Health Policy Center

Follow this and additional works at: [https://scholarworks.gsu.edu/ghpc\\_materials](https://scholarworks.gsu.edu/ghpc_materials)

---

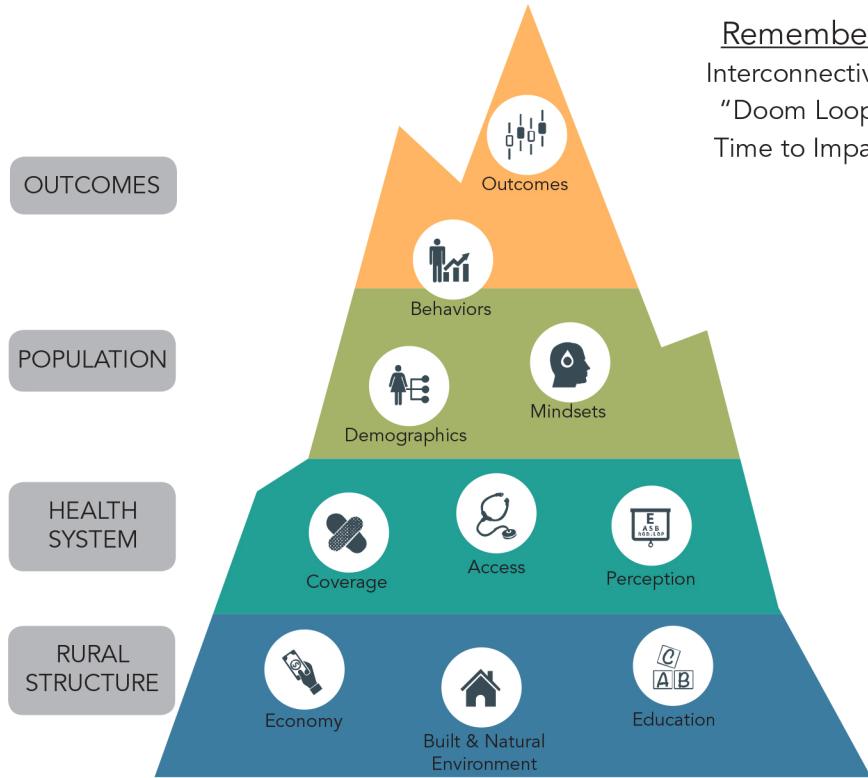
### Recommended Citation

Georgia Health Policy Center, "Rural Landscape Framework" (2017). *GHPC Materials*. 52.  
[https://scholarworks.gsu.edu/ghpc\\_materials/52](https://scholarworks.gsu.edu/ghpc_materials/52)

This Article is brought to you for free and open access by the Georgia Health Policy Center at ScholarWorks @ Georgia State University. It has been accepted for inclusion in GHPC Materials by an authorized administrator of ScholarWorks @ Georgia State University. For more information, please contact [scholarworks@gsu.edu](mailto:scholarworks@gsu.edu).

# STEP TWO

CONSIDER THE INFLUENCE OF RURAL KEY FACTORS IN PLANNING YOUR EFFORTS



# STEP THREE

CONSIDER THE IMPACT OF MACRO-TRENDS, SYSTEM STRENGTHS AND CHALLENGES

1. How are macro-trends shaping key factors in rural communities and how might that impact the design of your research, policy or programs?

Macro-trends:

- Shortage of skilled workers
- Technological advances and disruptions
- Impact of federal policies and programs

2. How do the system strengths and challenges of rural communities impact the design of your research, policy or programs?



# UNDERSTANDING THE RURAL LANDSCAPE

A framework to help ensure health research, policies and programs are rural-relevant



## STEP ONE

RECOGNIZE THE CONTEXT OF RURAL WITHIN THE SCOPE OF YOUR EFFORTS

Three questions for consideration:

1. In regards to your identified the health research initiative, policy or program of interest, what is the scope of your efforts (e.g., national, regional, state, local) and what types of communities might be impacted (e.g., micropolitan, small towns, tribal, frontier)?
2. Which definition are you using to determine the rural designation of included communities (e.g. various federal, state, funder)?
3. What attributes can you discern about the culture (e.g., shared beliefs, history, lore, traditions) of the rural communities within the scope of your efforts?

