

Georgia State University

ScholarWorks @ Georgia State University

GHPC Materials

Georgia Health Policy Center

9-7-2016

Understanding rural landscape

Georgia Health Policy Center

Follow this and additional works at: https://scholarworks.gsu.edu/ghpc_materials

Recommended Citation

Georgia Health Policy Center, "Understanding rural landscape" (2016). *GHPC Materials*. 53.
https://scholarworks.gsu.edu/ghpc_materials/53

This Article is brought to you for free and open access by the Georgia Health Policy Center at ScholarWorks @ Georgia State University. It has been accepted for inclusion in GHPC Materials by an authorized administrator of ScholarWorks @ Georgia State University. For more information, please contact scholarworks@gsu.edu.



UNDERSTANDING THE RURAL LANDSCAPE

GEORGIA HEALTH POLICY CENTER

Andrew Young School of Policy Studies

GEORGIA STATE UNIVERSITY

55 Park Place NE, 8th Floor • Atlanta, Georgia 30303

404.413.0314



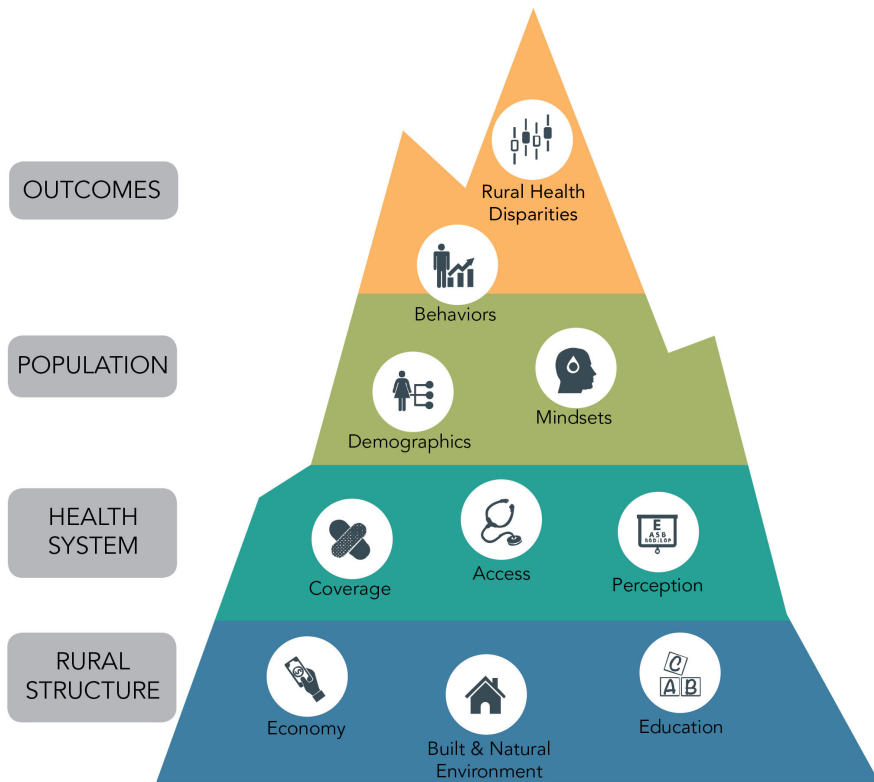
The Georgia Health Policy Center (GHPC) has a longstanding history of working in rural communities. In order to help others understand the importance of the rural context within the scope of health improvement efforts, GHPC developed two learning opportunities that can help promote rural-relevant programs, policies, and research.

The rural health learning modules are intended for local, state, or federal stakeholders and focus on common characteristics of rural communities, as well as opportunities for innovation in rural health programs and research. Central to the module is application of a three-step framework stakeholders can use to inform development of policy and program planning efforts.

Modules build a shared understanding of —

- The assets and challenges of rural communities
- Interconnectivity of factors that impact rural health and well-being
- Opportunities to leverage resources to ensure the rural-relevance of health research, policy, and programs

KEY FACTORS INFLUENCING RURAL HEALTH



Use this model when considering the factors that impact rural health and well-being.



2017 Key Factors Model Rural Health by the Board of Regents of the University System of Georgia by and on behalf of Georgia State University and Georgia Health Policy Center is licensed under a Creative Commons Attribution-NonCommercial-NoDerivs 3.0 United States License.