

Georgia State University

## ScholarWorks @ Georgia State University

---

GHPC Materials

Georgia Health Policy Center

---

9-13-2018

### Housing as a Platform for Health and Wellness in Georgia

Georgia Health Policy Center

Follow this and additional works at: [https://scholarworks.gsu.edu/ghpc\\_materials](https://scholarworks.gsu.edu/ghpc_materials)

---

#### Recommended Citation

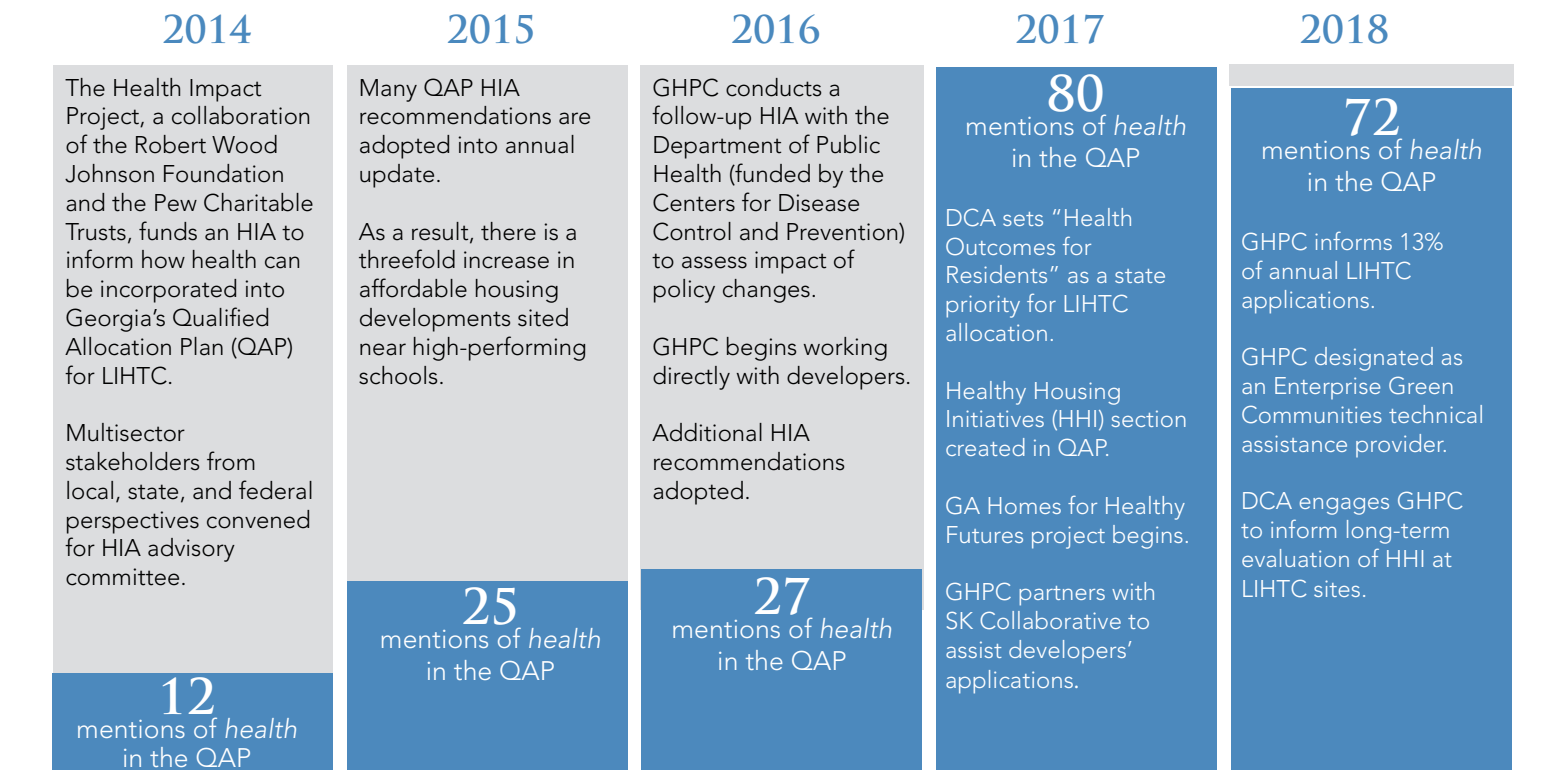
Georgia Health Policy Center, "Housing as a Platform for Health and Wellness in Georgia" (2018). *GHPC Materials*. 56.

[https://scholarworks.gsu.edu/ghpc\\_materials/56](https://scholarworks.gsu.edu/ghpc_materials/56)

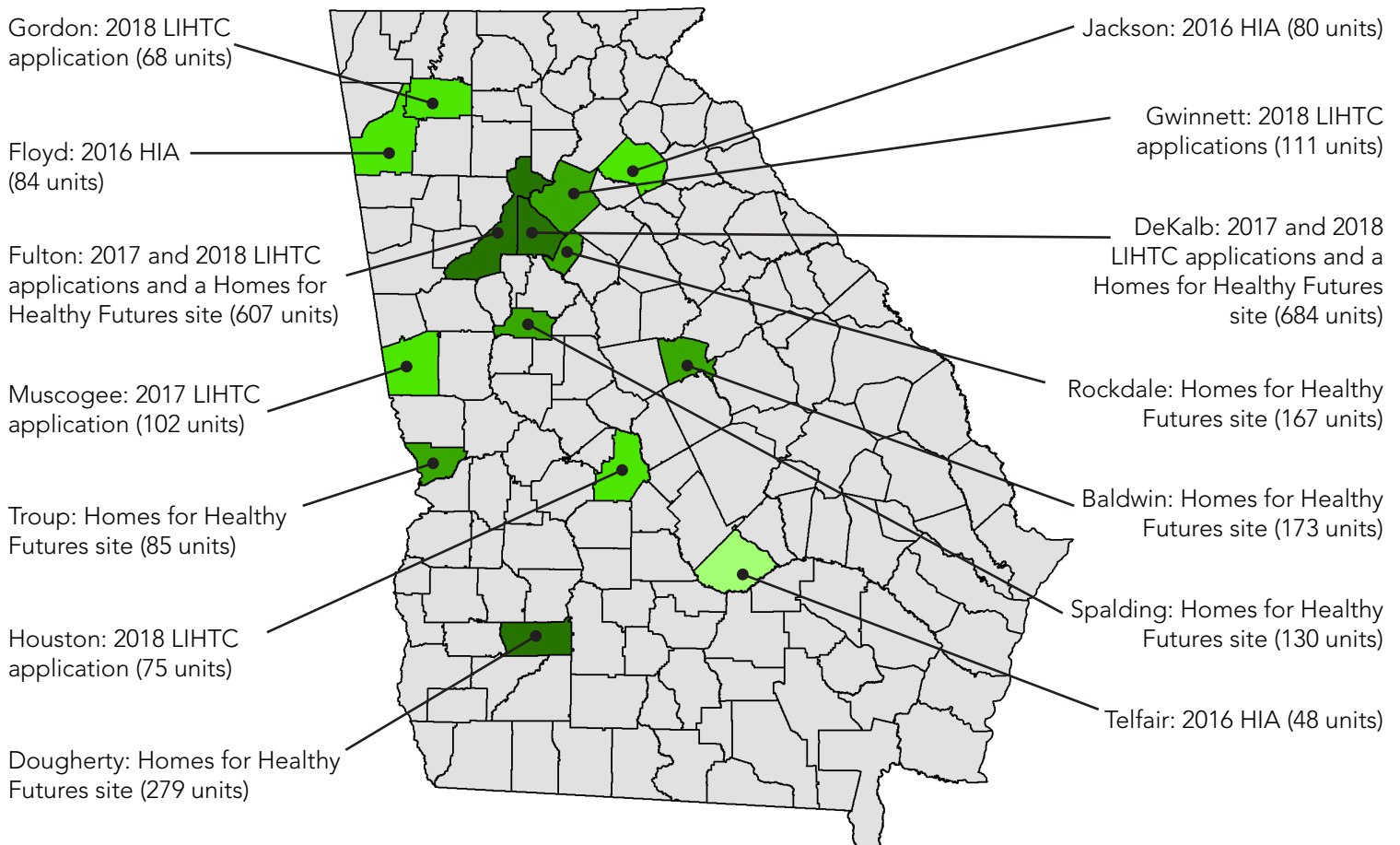
This Article is brought to you for free and open access by the Georgia Health Policy Center at ScholarWorks @ Georgia State University. It has been accepted for inclusion in GHPC Materials by an authorized administrator of ScholarWorks @ Georgia State University. For more information, please contact [scholarworks@gsu.edu](mailto:scholarworks@gsu.edu).

# HOUSING AS A PLATFORM FOR HEALTH AND WELLNESS IN GEORGIA:

## THE RIPPLE EFFECTS OF THE HEALTH IMPACT ASSESSMENT (HIA)



## GHPC-INFORMED UNITS BY GEORGIA COUNTY



# PROMOTING HEALTH THROUGH ALL POLICIES: AFFORDABLE HOUSING

*"Strategically approaching affordable housing as a platform for health and wellness has become one of our top priorities."*

—Director, Housing Finance and Development, Georgia Department of Community Affairs

Affordable housing stakeholders in Georgia have made significant advances toward aligning health and housing perspectives over the last five years, starting with the annual allocation of \$22 million in low-income housing tax credits (LIHTCs).

## 1<sup>ST</sup>

The Georgia Health Policy Center (GHPC), in partnerships with the Georgia Department of Community Affairs (DCA), conducted the nation's first health impact assessment (HIA) to inform LIHTC policy, demonstrating how public health perspectives could be more strongly incorporated.

## 30+

GHPC has worked directly with over 30 housing developers, local housing authorities, and other stakeholders across the country to implement recommendations from the initial HIA, to identify new opportunities for partnership, and to more fully integrate health into the mindset of affordable housing decision-makers.

## 10,000

Adoption of health-related criteria into the allocation of LIHTC in Georgia has indirectly influenced the well-being of residents in over 10,000 units of affordable housing across the state. GHPC has had direct influence on over 1,100 of these units through ongoing partnerships with housing developers in urban, suburban, and rural communities.



Building on this collaborative success, DCA, the Kresge Foundation, Southface Energy Institute, and GHPC are partnering on the Georgia Homes for Healthy Futures project to improve public housing authorities' ability to address resident health through better quality environments, programs, and services.

404.413.0314  
ghpc.gsu.edu  
ghpc@gsu.edu

 Georgia  
Health Policy  
Center

 Georgia State  
University

ANDREW YOUNG SCHOOL  
OF POLICY STUDIES