

Georgia State University

ScholarWorks @ Georgia State University

GHPC Materials

Georgia Health Policy Center

10-23-2018

COE Fact Sheet

Georgia Health Policy Center

Follow this and additional works at: https://scholarworks.gsu.edu/ghpc_materials

Recommended Citation

Georgia Health Policy Center, "COE Fact Sheet" (2018). *GHPC Materials*. 105.
https://scholarworks.gsu.edu/ghpc_materials/105

This Article is brought to you for free and open access by the Georgia Health Policy Center at ScholarWorks @ Georgia State University. It has been accepted for inclusion in GHPC Materials by an authorized administrator of ScholarWorks @ Georgia State University. For more information, please contact scholarworks@gsu.edu.



The Center of Excellence for Children's Behavioral Health is part of the Georgia Health Policy Center, housed within Georgia State University's Andrew Young School of Policy Studies. The center was created in partnership with the Office of Children, Young Adults and Families at the Georgia Department of Behavioral Health and Developmental Disabilities.

With a three-pronged focus on research, policy and practice, the Center of Excellence is engaged in multiple training initiatives designed to build the capacity of the state's behavioral health workforce, research and evaluation projects designed to measure program effectiveness of efforts in the field, and technical assistance with providers and state agencies in the areas of workforce development and evaluation.

The Center of Excellence has worked extensively throughout the state of Georgia and has developed relationships with other centers of excellence as well as behavioral health organizations around the country. With a skilled team, and working in tandem with a broad array of partners, the Center of Excellence is supporting the development and implementation of a sustainable System of Care that is individualized, comprehensive, coordinated, culturally competent, and driven by child and family needs.

VISION

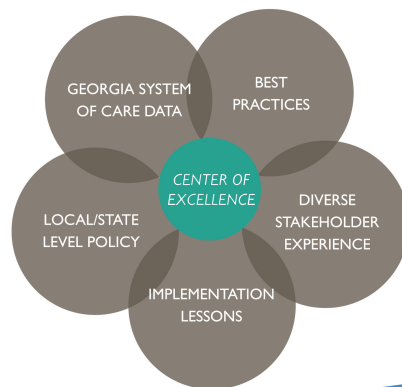
Children, young adults, and families will have improved quality of life and a productive future as a result of systems that promote optimum behavioral health.

CORE FUNCTIONS

- Creating an integrated data hub
- Conducting objective research
- Translating evidence-driven models into practice
- Providing thought leadership with a systems perspective
- Developing community-based workforce capacity
- Providing program implementation support

OUR APPROACH

Integration is key



OUR WORK

Translating Evidence into Policy and Practice

Workforce Development

The Center of Excellence provides training in a variety of areas to help build workforce capacity within the state of Georgia. Examples include training around High Fidelity Wraparound, Trauma-Informed Systems, Cultural and Linguistic Competency (CLC), and Recovery-Oriented Cognitive Behavioral Therapy (CBT) for adults with serious emotional disturbances. The Center of Excellence also provides technical assistance to providers and other agencies on topics such as using data for decision-making for quality improvement, integrating mental health into the school system, and financial and sustainability planning.

- Training in Wraparound, Trauma, CLC, Transition Age Youth, Recovery-oriented CBT
- Technical assistance to provider groups and other agencies (e.g., Quality Improvement/Quality Assurance, integrating mental health into schools)
- Logistical support for training and meetings

Policy and Finance

The Center of Excellence conducts research on financing structures and service delivery opportunities for behavioral health. We provide administrative oversight, strategic meeting facilitation and data support to the Interagency Directors Team, a collaborative of multiple child serving agencies in Georgia.

- Research on finance structure and service delivery opportunities for behavioral health
- Administrative oversight, strategic meeting facilitation, and data support to the Interagency Directors Team
- Annual report compilation

Research and Evaluation

The Center of Excellence provides monitoring and evaluation for programs provided by various service providers and state agencies. Examples include mental health and co-occurring disorders clubhouses, Psychiatric Residential Treatment Facilities (PRTF), Crisis Stabilization Units (CSU), Care Management Entities (CME), and school-based mental health programs. In addition, we conduct unbiased research to inform behavioral health practice and policy.

- Monitoring and evaluation of clubhouses, PRTFs, CSUs, CMEs
- Monitoring and evaluation of school-based mental health efforts
- Conducting environmental scan on Wraparound sustainability
- Department of Juvenile Justice/CME Pilot

CONTACT US

Center of Excellence for Children's Behavioral Health
Georgia Health Policy Center
55 Park Place NE, 8th floor
Atlanta, GA 30303

404.413.0075 (phone)

404.413.0316 (fax)

By Mail:

P.O. Box 3992

Atlanta, GA 30302-3992

gacoe@gsu.edu

gacoeonline.gsu.edu



**CENTER OF EXCELLENCE FOR
CHILDREN'S BEHAVIORAL HEALTH**
integrating research, policy, and practice