

Georgia State University

ScholarWorks @ Georgia State University

GHPC Materials

Georgia Health Policy Center

11-10-2019

Aligning Brochure

Georgia Health Policy Center

Follow this and additional works at: https://scholarworks.gsu.edu/ghpc_materials

Recommended Citation

Georgia Health Policy Center, "Aligning Brochure" (2019). *GHPC Materials*. 131.
https://scholarworks.gsu.edu/ghpc_materials/131

This Article is brought to you for free and open access by the Georgia Health Policy Center at ScholarWorks @ Georgia State University. It has been accepted for inclusion in GHPC Materials by an authorized administrator of ScholarWorks @ Georgia State University. For more information, please contact scholarworks@gsu.edu.



ALIGNING SYSTEMS FOR HEALTH

Health Care + Public Health + Social Services



The Georgia Health Policy Center leads the Robert Wood Johnson Foundation's national initiative, *Aligning Systems for Health: Health Care + Public Health + Social Services*. The initiative focuses on learning about effective ways to coordinate and align health care, public health, and social services, to better address people's and communities' goals and needs.

Aligning Systems for Health strengthens the evidence base around conditions that foster alignment and will translate these insights for communities, researchers, and decision makers to support on-the-ground efforts aimed at greater coordination among systems.

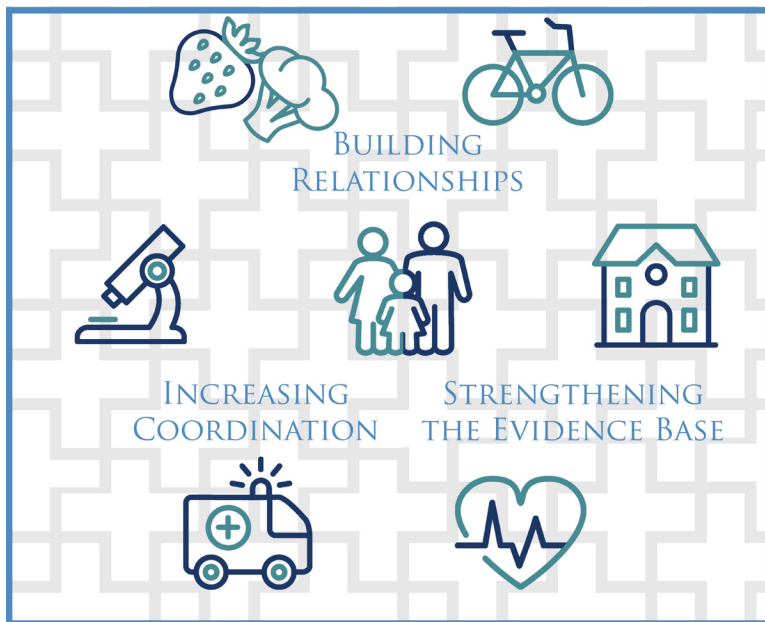


The Georgia Health Policy Center

- Synthesizes existing research and disseminates findings
- Builds relationships with those already working in the field, including the development of a community of practice
- Supports original research and evaluation by awarding and administering a \$3 million-grant portfolio

To learn more, visit us online at
<https://ghpc.gsu.edu/project/aligning-systems-for-health>

Across the nation, efforts are underway to align health care, public health, and social service systems to better address individuals' needs and goals and ultimately to build healthier and more equitable communities.



Aligning Systems for Health supports research to promote effective connections among health-promoting systems and to overcome barriers to multisector alignment. By creating lasting connections among health care, public health, and social service organizations, communities will be better positioned to tackle complex, health challenges and improve health and well-being for the individuals they serve.

ALIGNING SYSTEMS FOR HEALTH

Health Care + Public Health + Social Services

GEORGIA HEALTH POLICY CENTER
Andrew Young School of Policy Studies
GEORGIA STATE UNIVERSITY

55 Park Place NE, 8th Floor . Atlanta, Georgia 30303 . 404.413.0314

www.ghpc.gsu.edu/project/aligning

*The Georgia Health Policy Center leads the
Robert Wood Johnson Foundation's national initiative,
Aligning Systems for Health: Health Care + Public Health + Social Services.*

